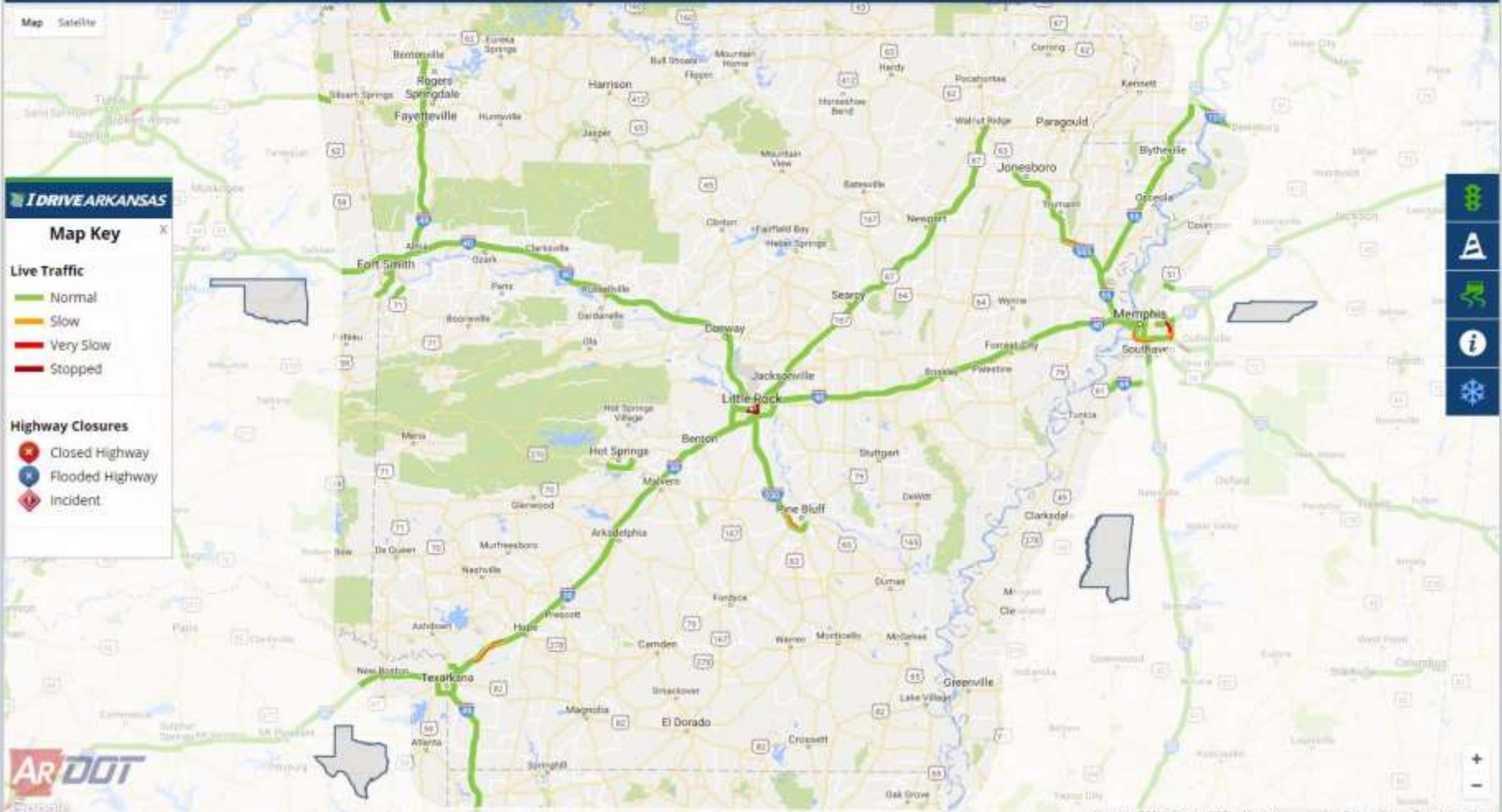


**Danny Straessle**  
**Public Information Officer**



**Highways in Your Hometown:  
Maintaining Situational Awareness with IDriveArkansas**

Tuesday, June 5, 2018



**IDRIVE ARKANSAS**

### Map Key

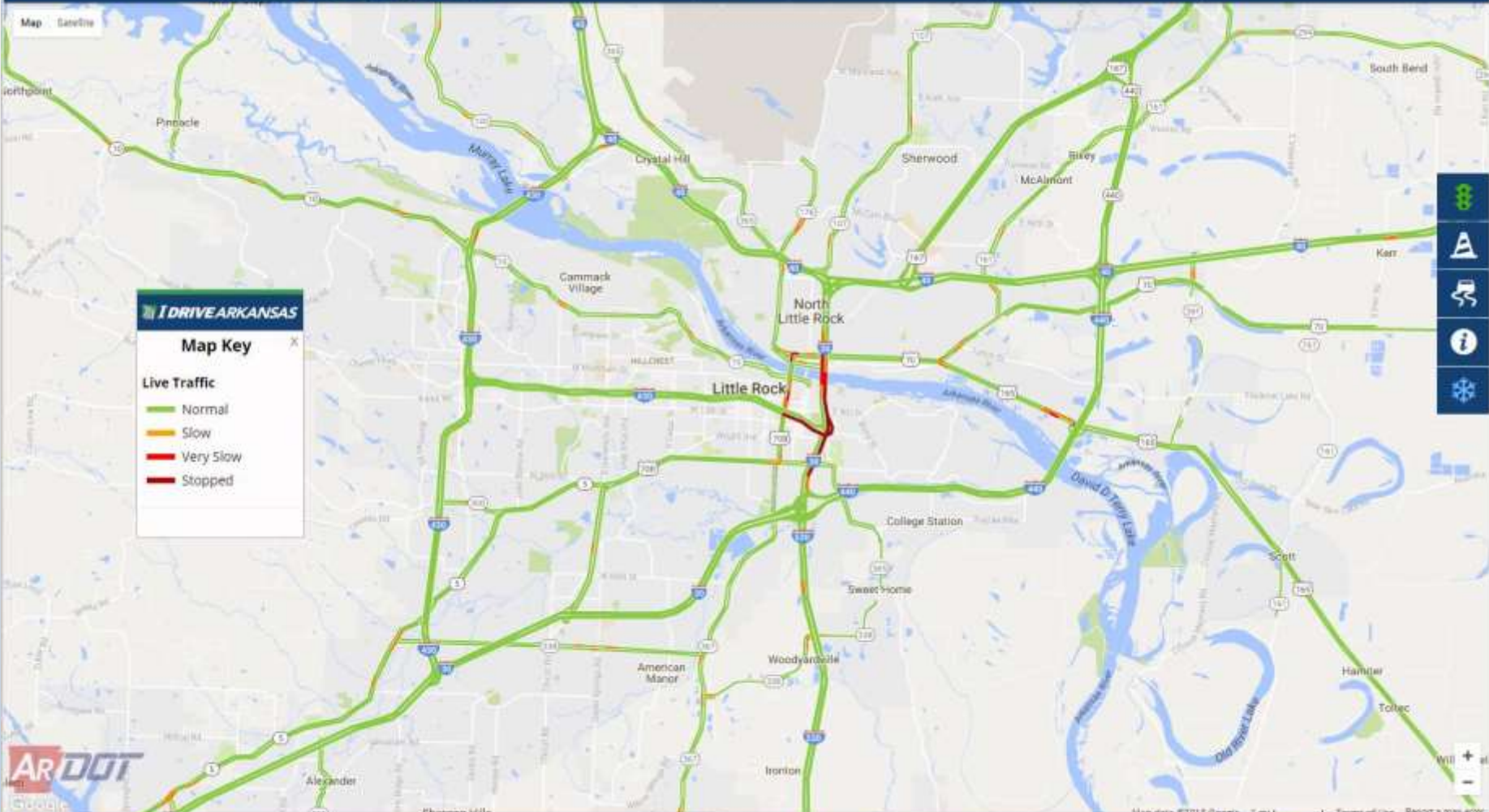
**Live Traffic**

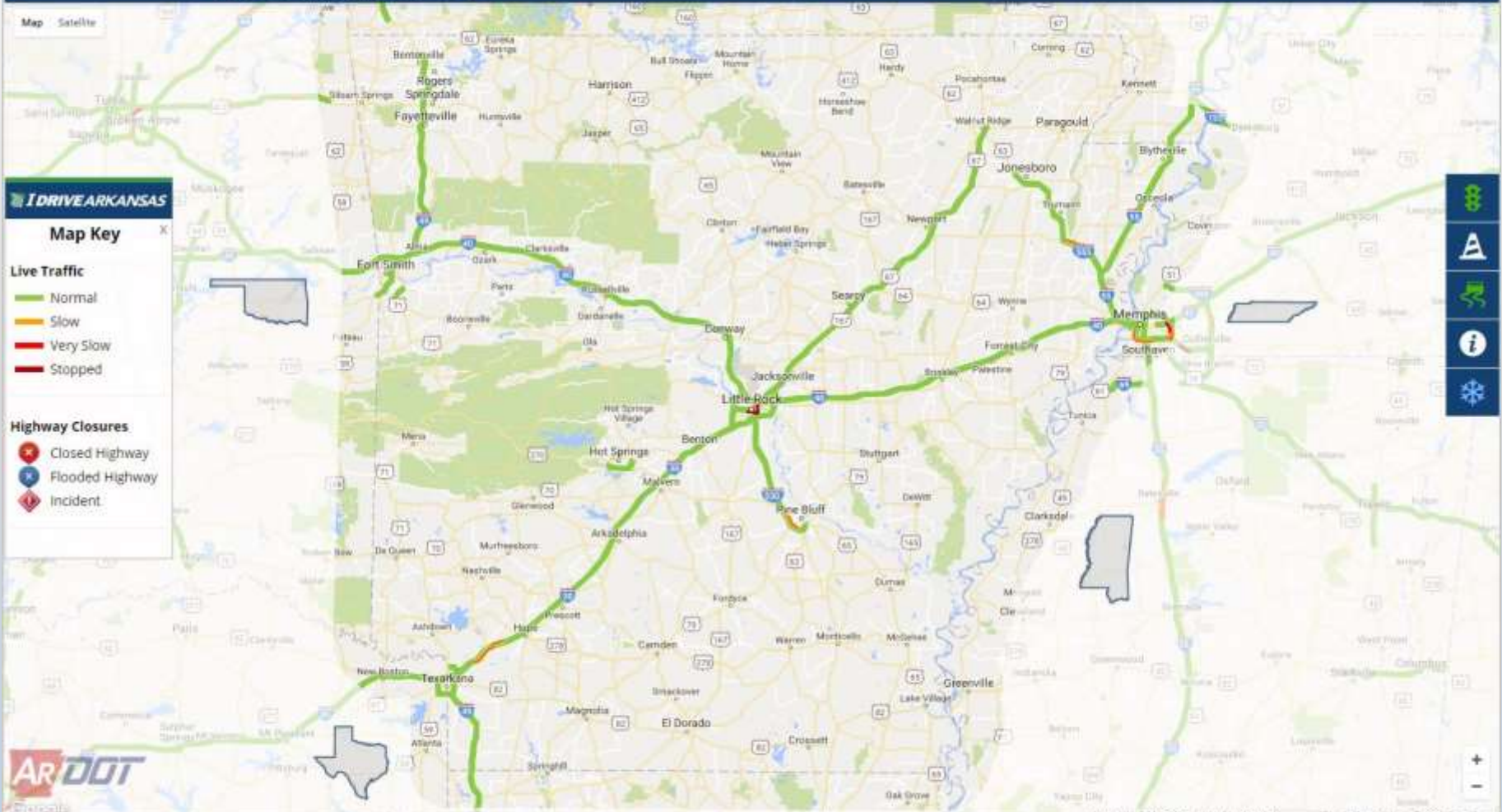
- Normal
- Slow
- Very Slow
- Stopped

**Highway Closures**

- Closed Highway
- Flooded Highway
- Incident

- Map
- Layers
- Info
- Weather





**I DRIVE ARKANSAS**

### Map Key

**Live Traffic**

- Normal
- Slow
- Very Slow
- Stopped

**Highway Closures**

- Closed Highway
- Flooded Highway
- Incident

- Map
- Layers
- Info
- Weather

Map Satellite

### I DRIVE ARKANSAS

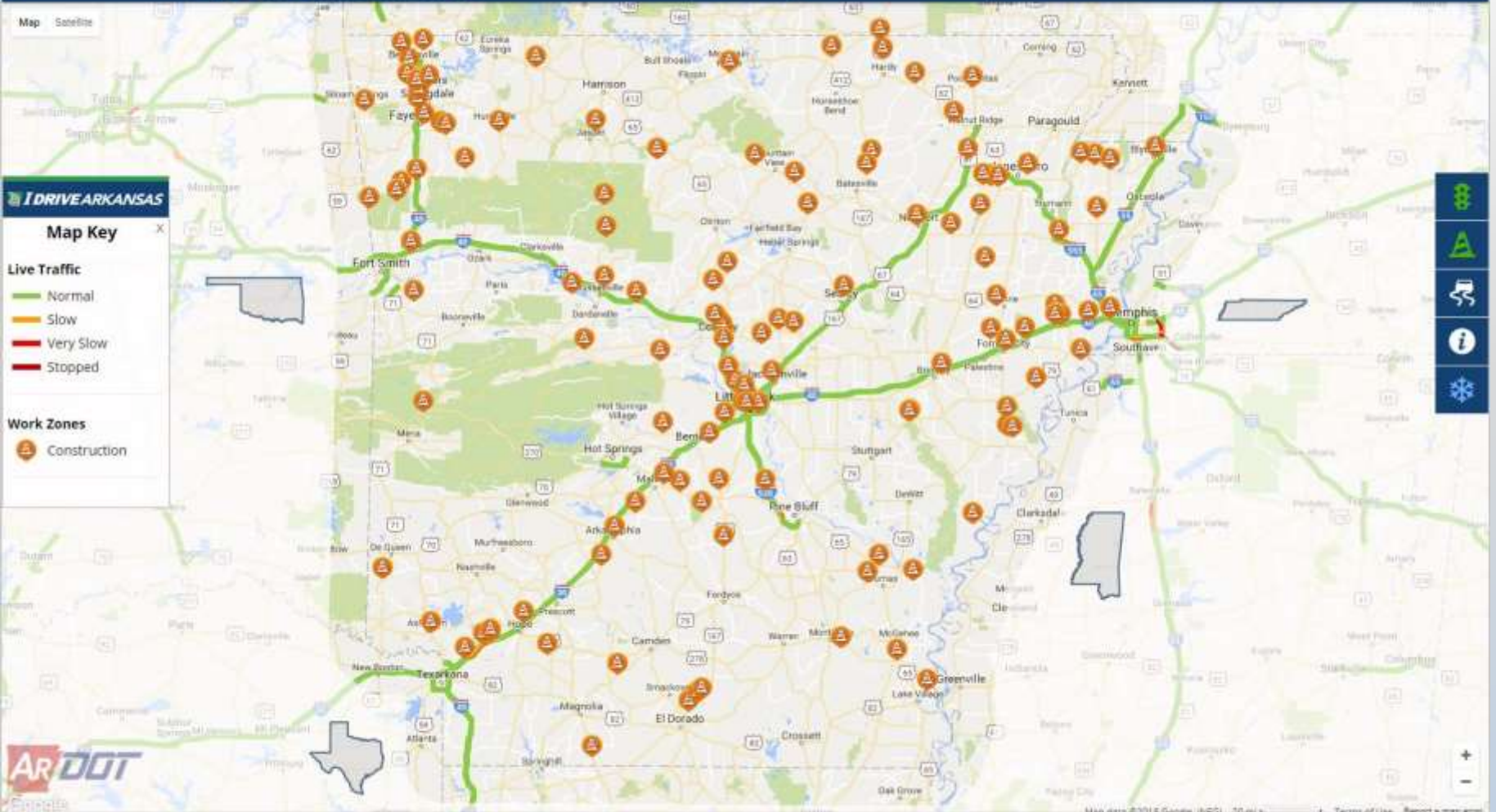
#### Map Key

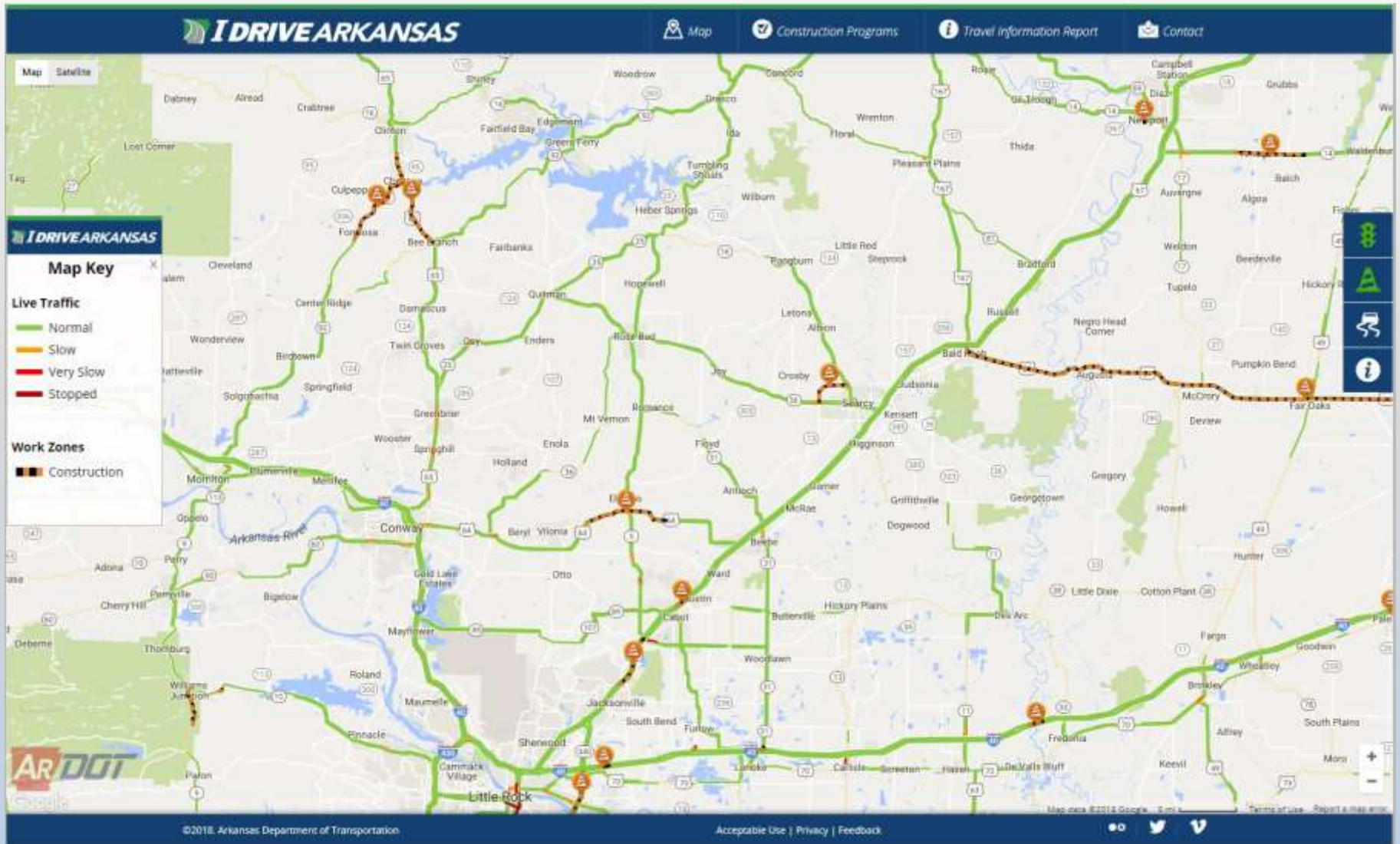
##### Live Traffic

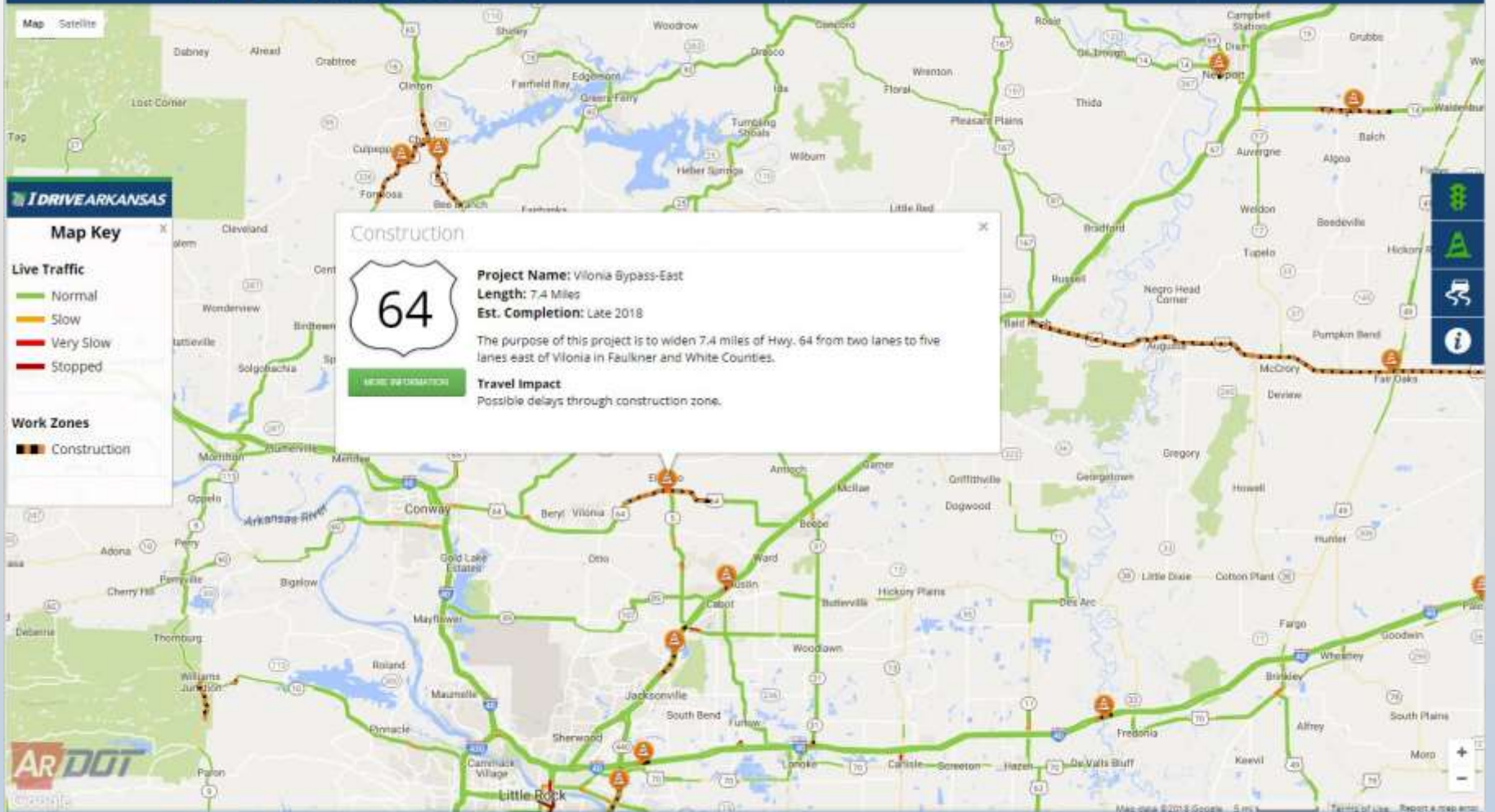
- Normal
- Slow
- Very Slow
- Stopped

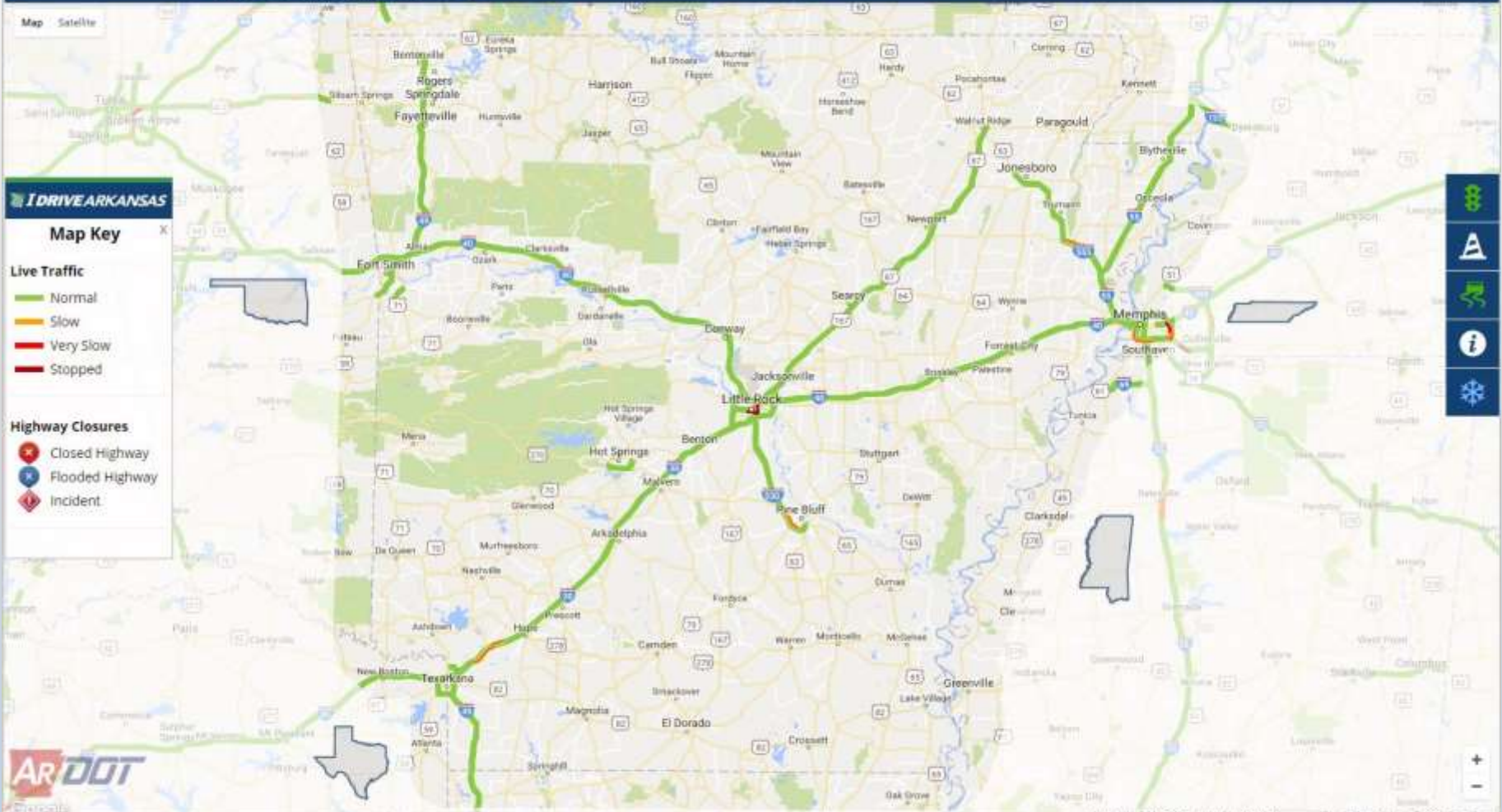
##### Work Zones

- Construction









**IDRIVE ARKANSAS**

**Map Key**

**Live Traffic**

- Normal
- Slow
- Very Slow
- Stopped

**Highway Closures**

- Closed Highway
- Flooded Highway
- Incident

- Map
- Layers
- Info
- Weather



Map Satellite

**IDRIVE ARKANSAS**

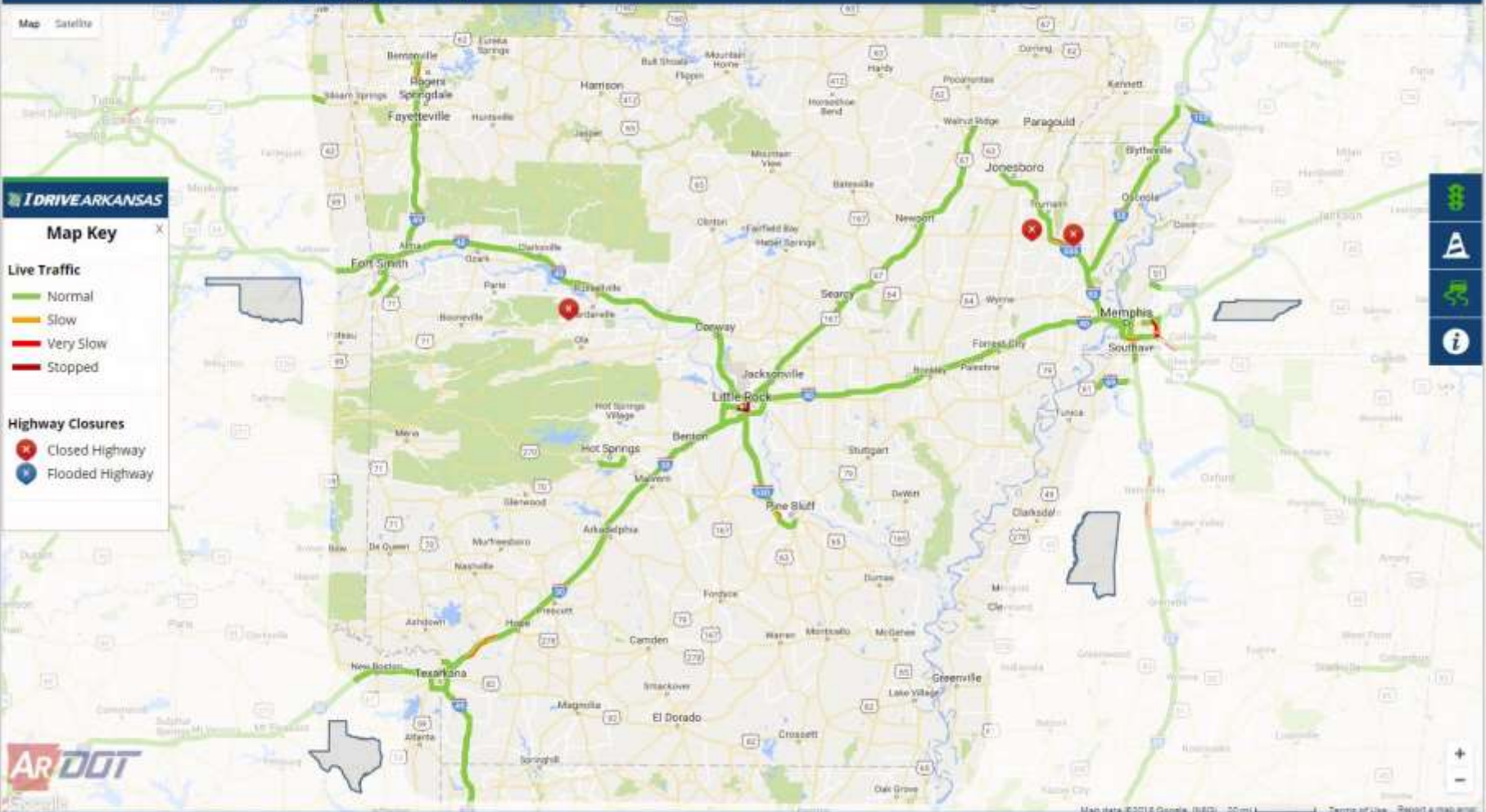
**Map Key**

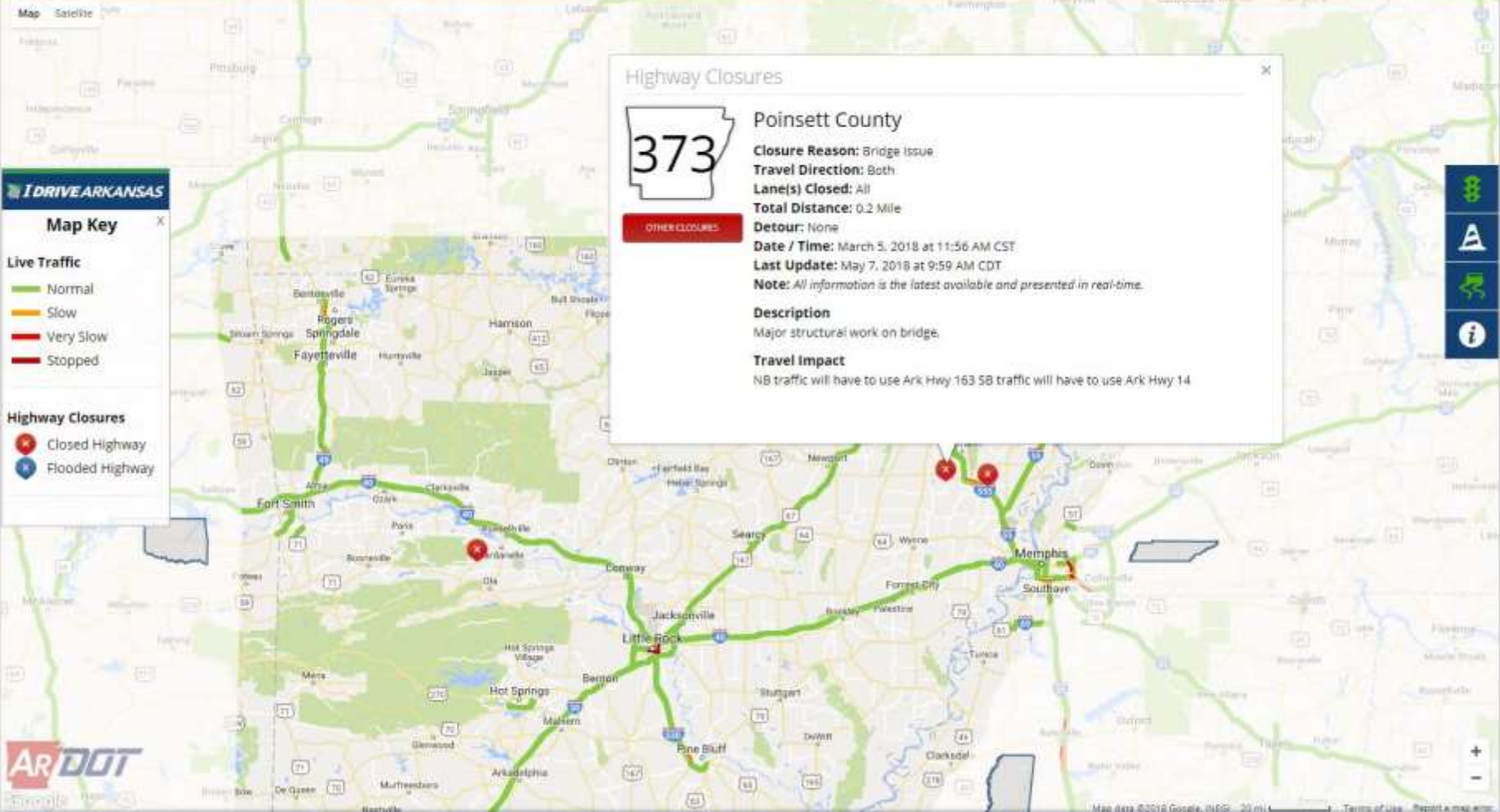
**Live Traffic**

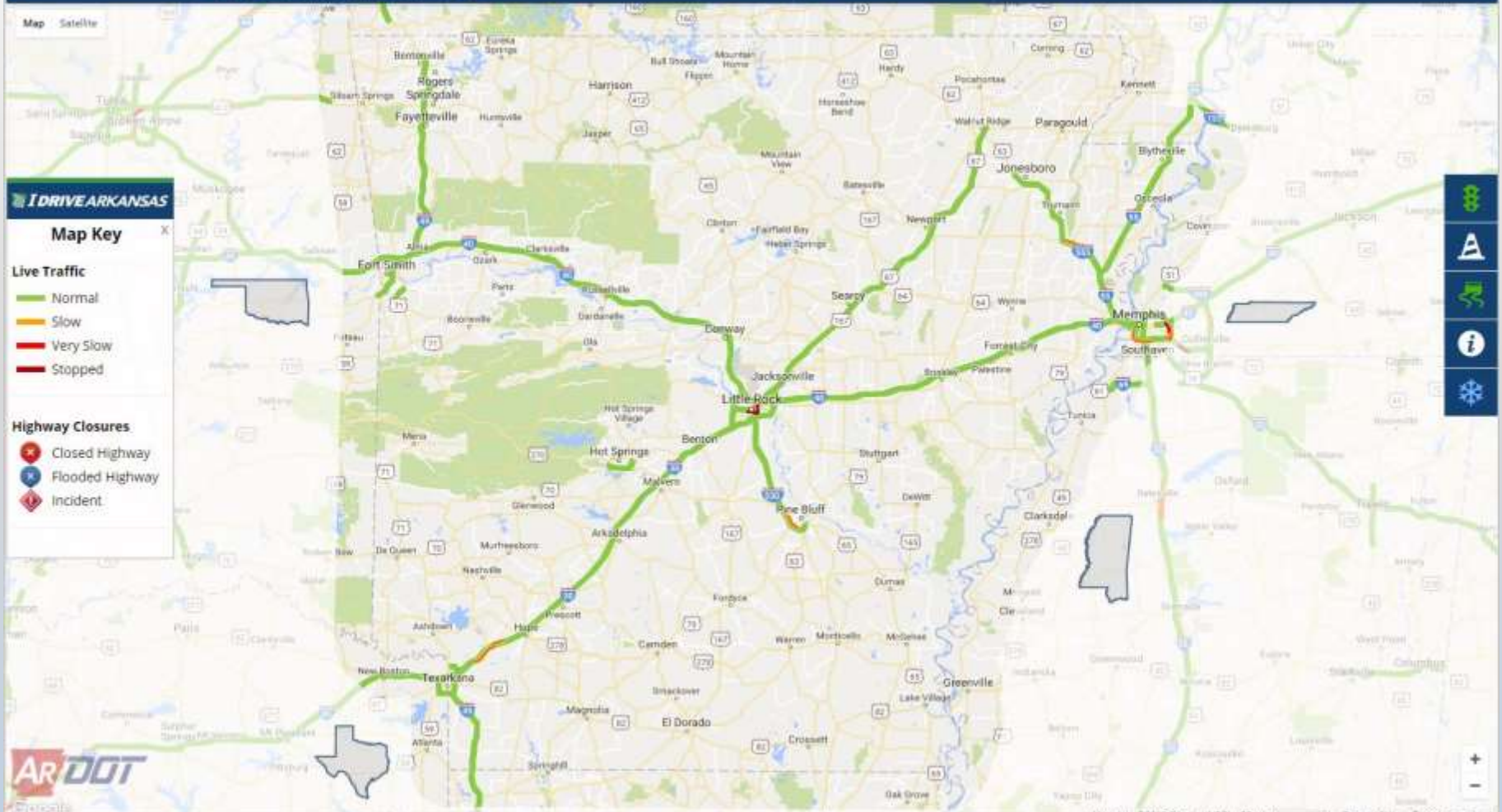
- Normal
- Slow
- Very Slow
- Stopped

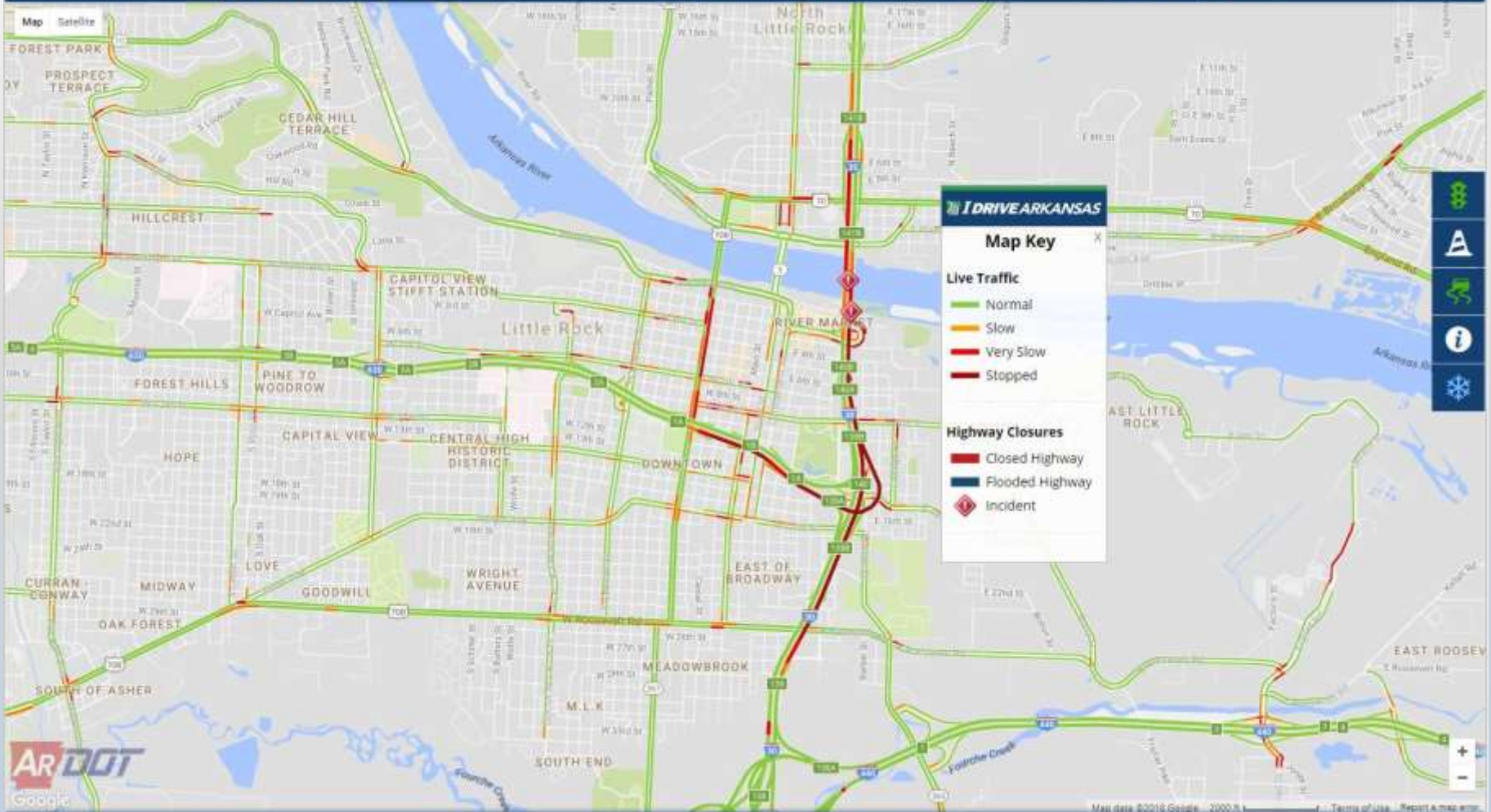
**Highway Closures**

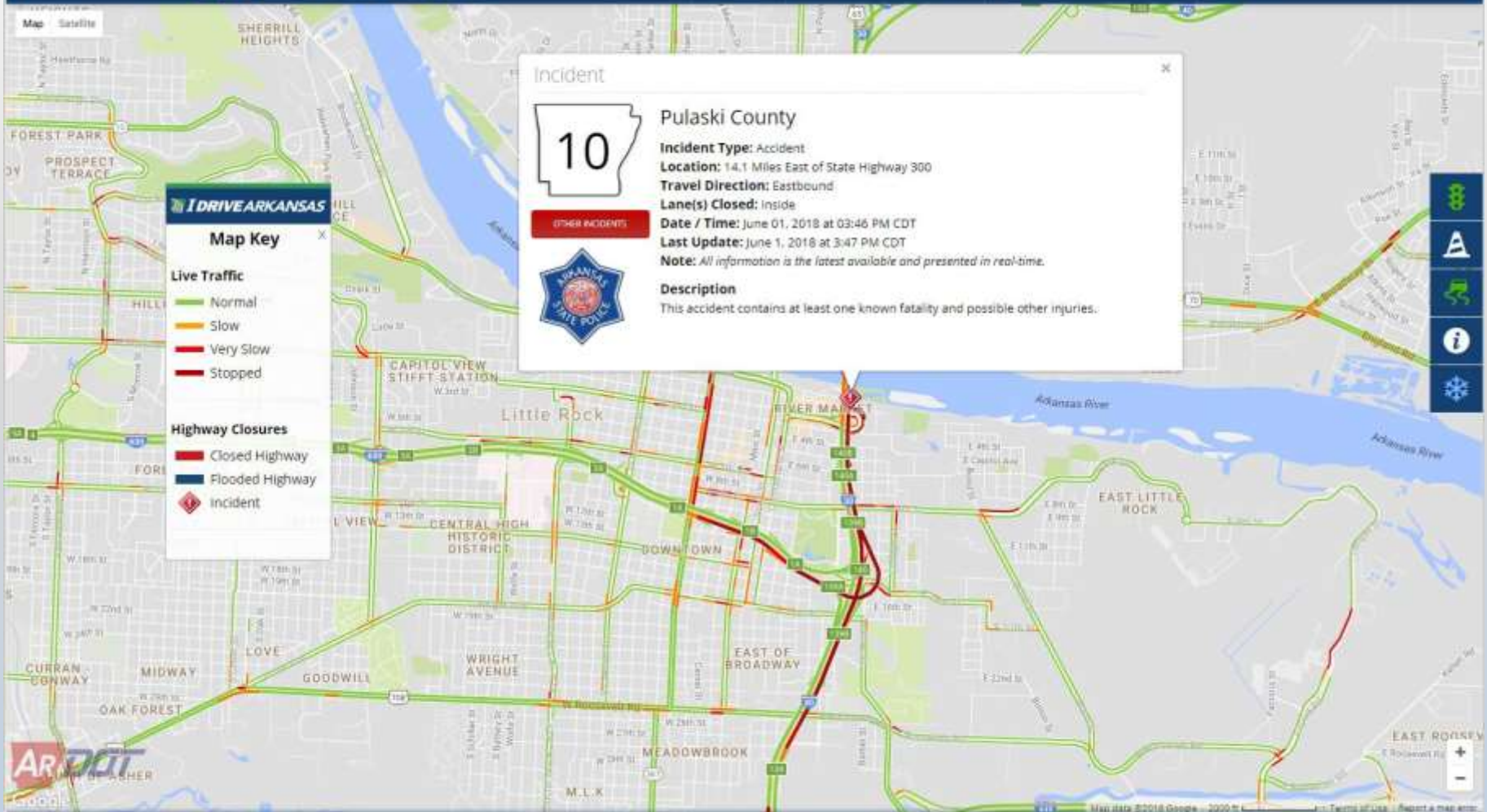
- Closed Highway
- Flooded Highway

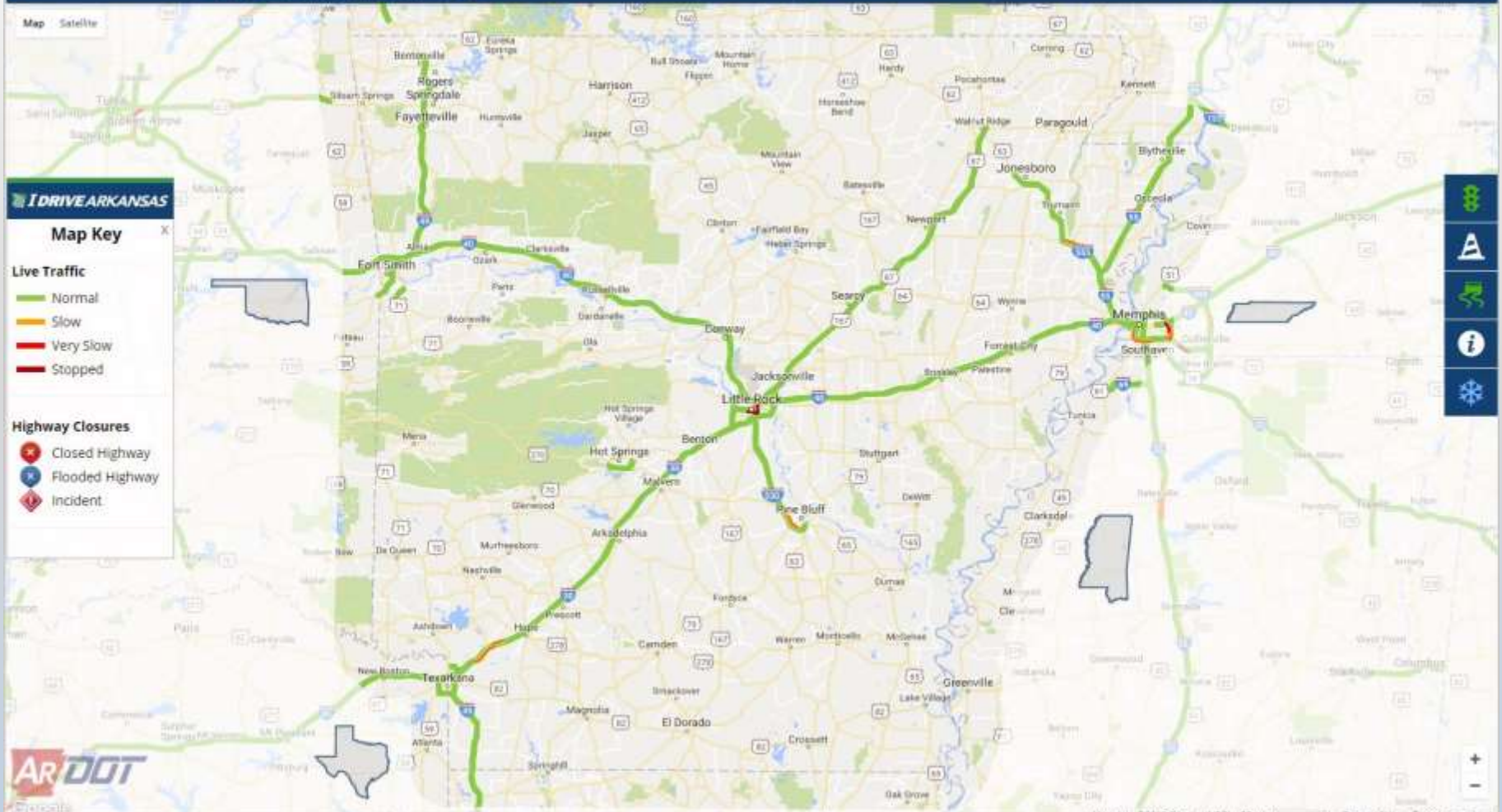












Map Satellite

## IDRIVE ARKANSAS

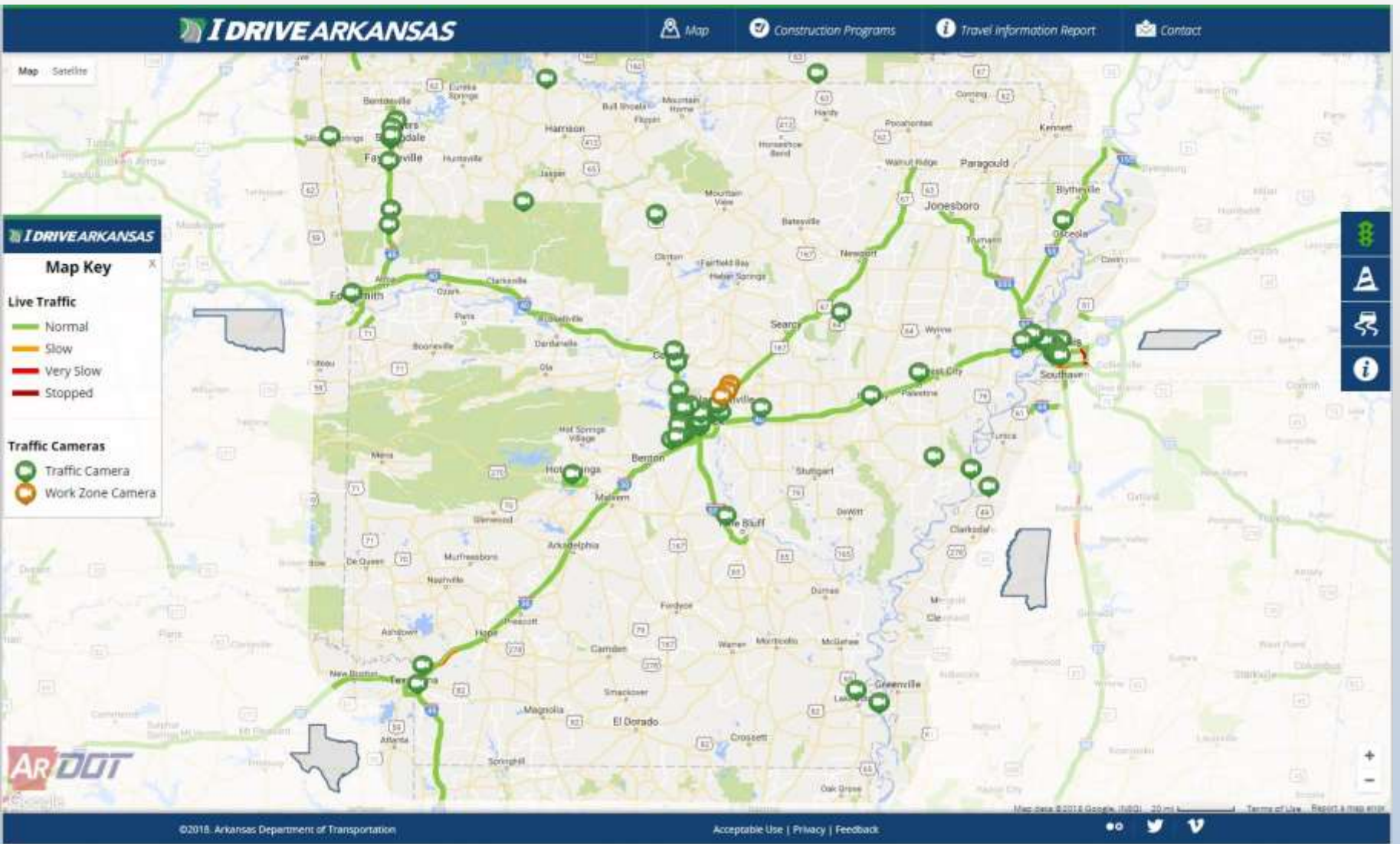
### Map Key

#### Live Traffic

- Normal
- Slow
- Very Slow
- Stopped

#### Traffic Cameras

- Traffic Camera
- Work Zone Camera



**IDRIVE ARKANSAS**

Map Construction Programs Travel Information Report Contact

Map Satellite Terrain

**IDRIVE ARKANSAS**

**Map Key**

**Live Traffic**

- Normal
- Slow
- Very Slow
- Stopped

**Traffic Cameras**

- Traffic Camera
- Work Zone Camera

©2018, Arkansas Department of Transportation

Acceptable Use | Privacy | Feedback



Map Satellite

**IDRIVE ARKANSAS**

**Map Key**

**Live Traffic**

- Normal
- Slow
- Very Slow
- Stopped

**Traffic Cameras**

- Traffic Camera
- Work Zone Camera

Traffic Camera



Interstate 30



Camera View

6015

REPORT A PROBLEM

TERMS OF USE









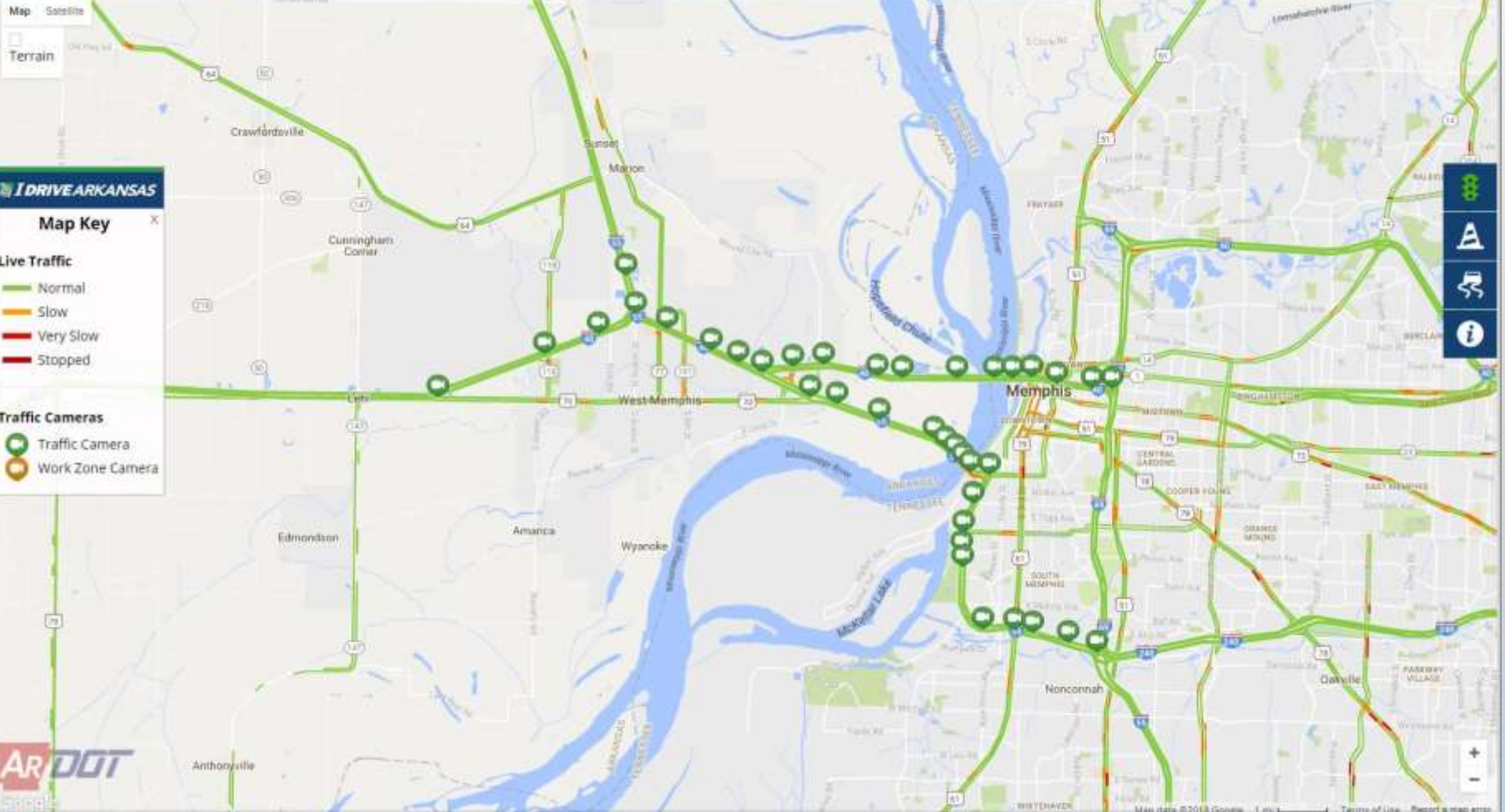












**IDRIVE ARKANSAS**

**Map Key**

**Live Traffic**

- Normal
- Slow
- Very Slow
- Stopped


**Traffic Cameras**

- Traffic Camera
- Work Zone Camera

- Traffic Camera Icon
- Map Icon
- Accessibility Icon
- Information Icon



16N

 **SmartWay**  
TDOT

I-55 N/O MS RIVER 0.7

I DRIVE ARKANSAS

 Map
 Construction Programs
 Travel Information Report
 Contact

**Map Key**

**Live Traffic**

- Normal
- Slow
- Very Slow
- Stopped

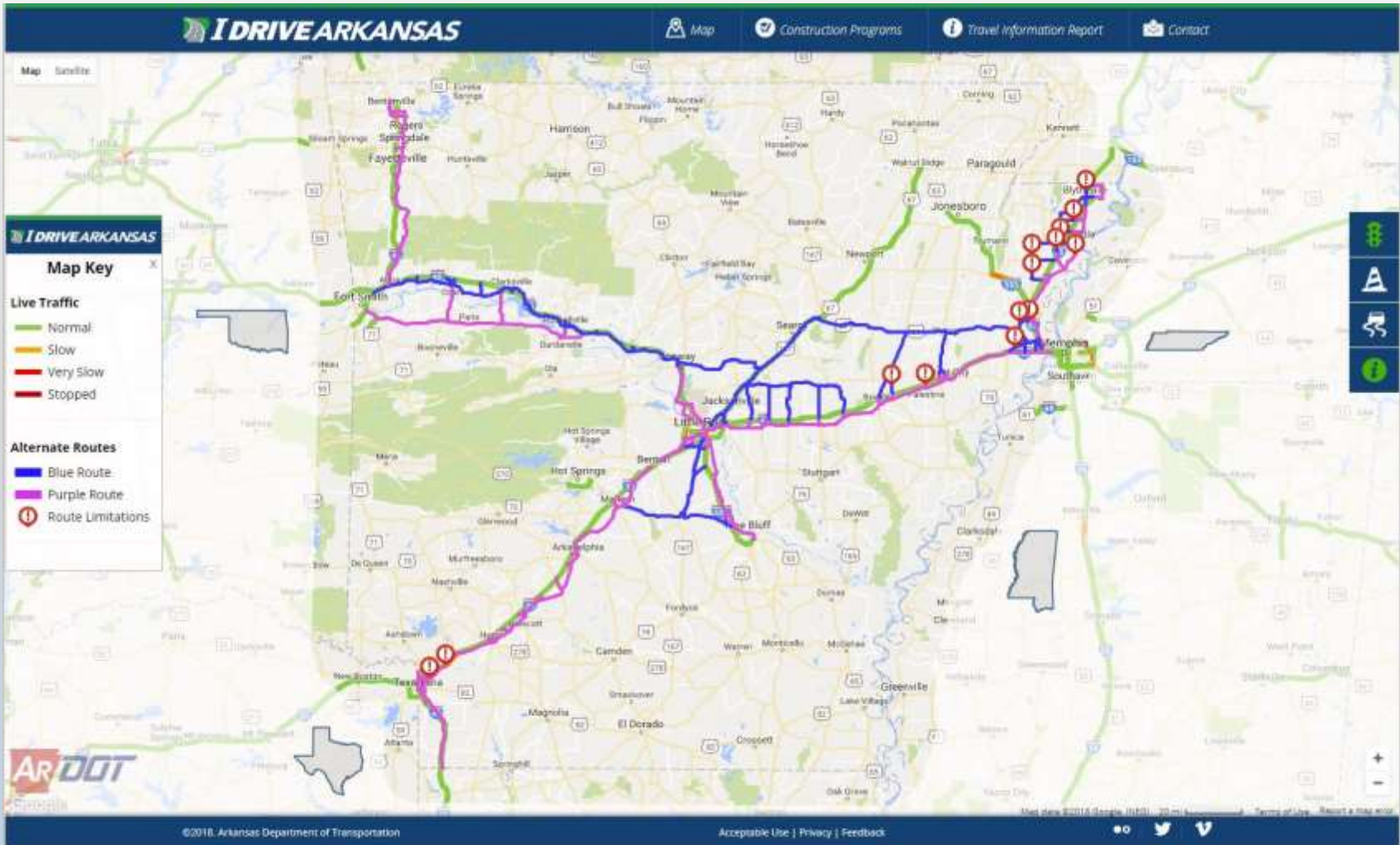
**Highway Closures**

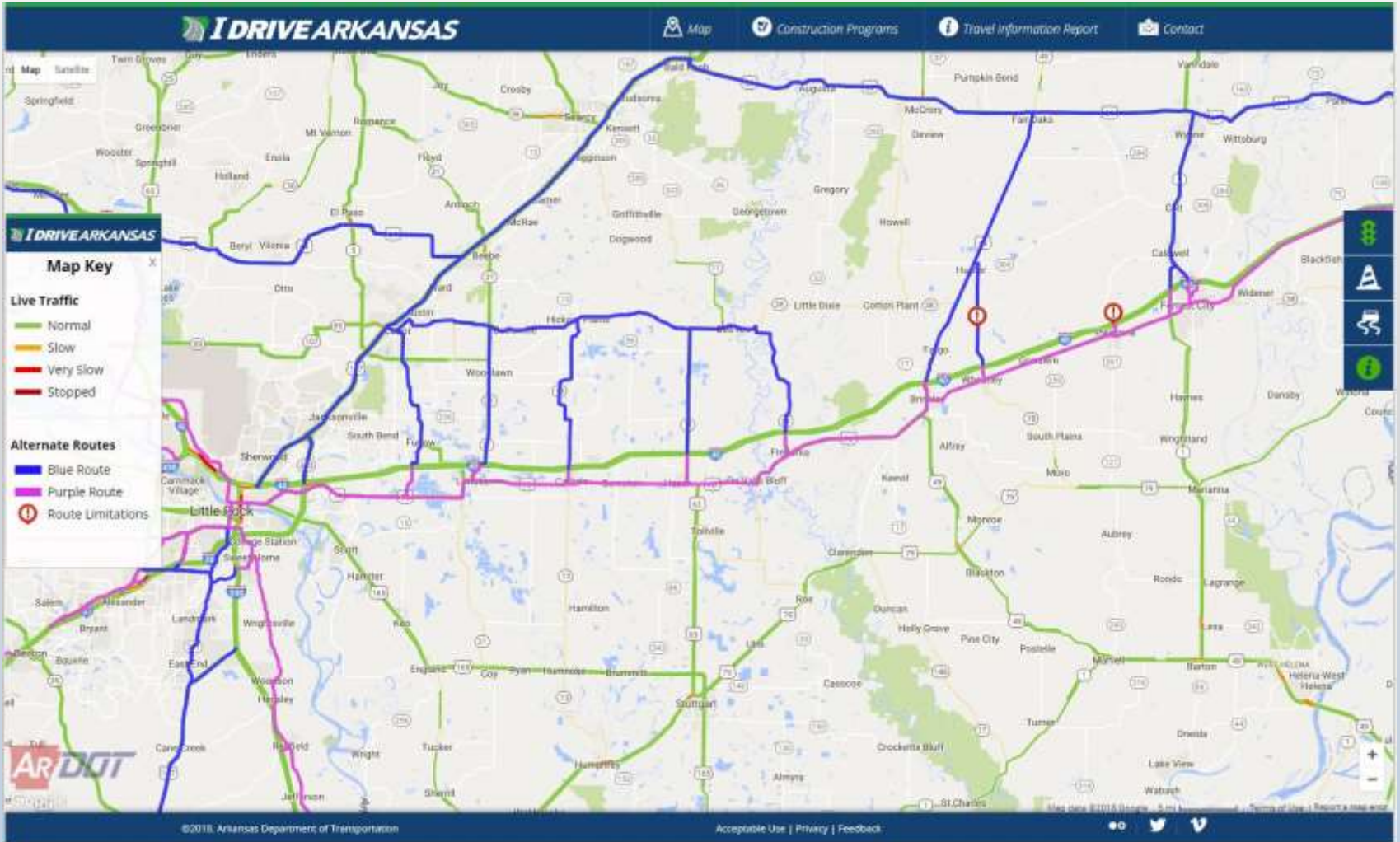
- Closed Highway
- Flooded Highway
- Incident

©2016 Arkansas Department of Transportation

Acceptable Use | Privacy | Feedback

Map data ©2016 Google, INEGI 20 mi





I DRIVE ARKANSAS

[Map](#)
[Construction Programs](#)
[Travel Information Report](#)
[Contact](#)

**Map Key**

**Live Traffic**

- Normal
- Slow
- Very Slow
- Stopped

**Alternate Routes**

- Blue Route
- Purple Route
- ⓪ Route Limitations

**Weight Restriction**

218

**Weight Restricted Road**

- Gross Weight:** 64,000 lbs.
- Single Axle (8 tons):** 18,000 lbs.
- Tandem Axle (15 Tons):** 30,000 lbs.

[View Information](#)

©2018 Arkansas Department of Transportation

Acceptable Use | Privacy | Feedback

# I DRIVE ARKANSAS

Map

Construction Programs

Travel Information Report

Contact

Map Satellite

## I DRIVE ARKANSAS

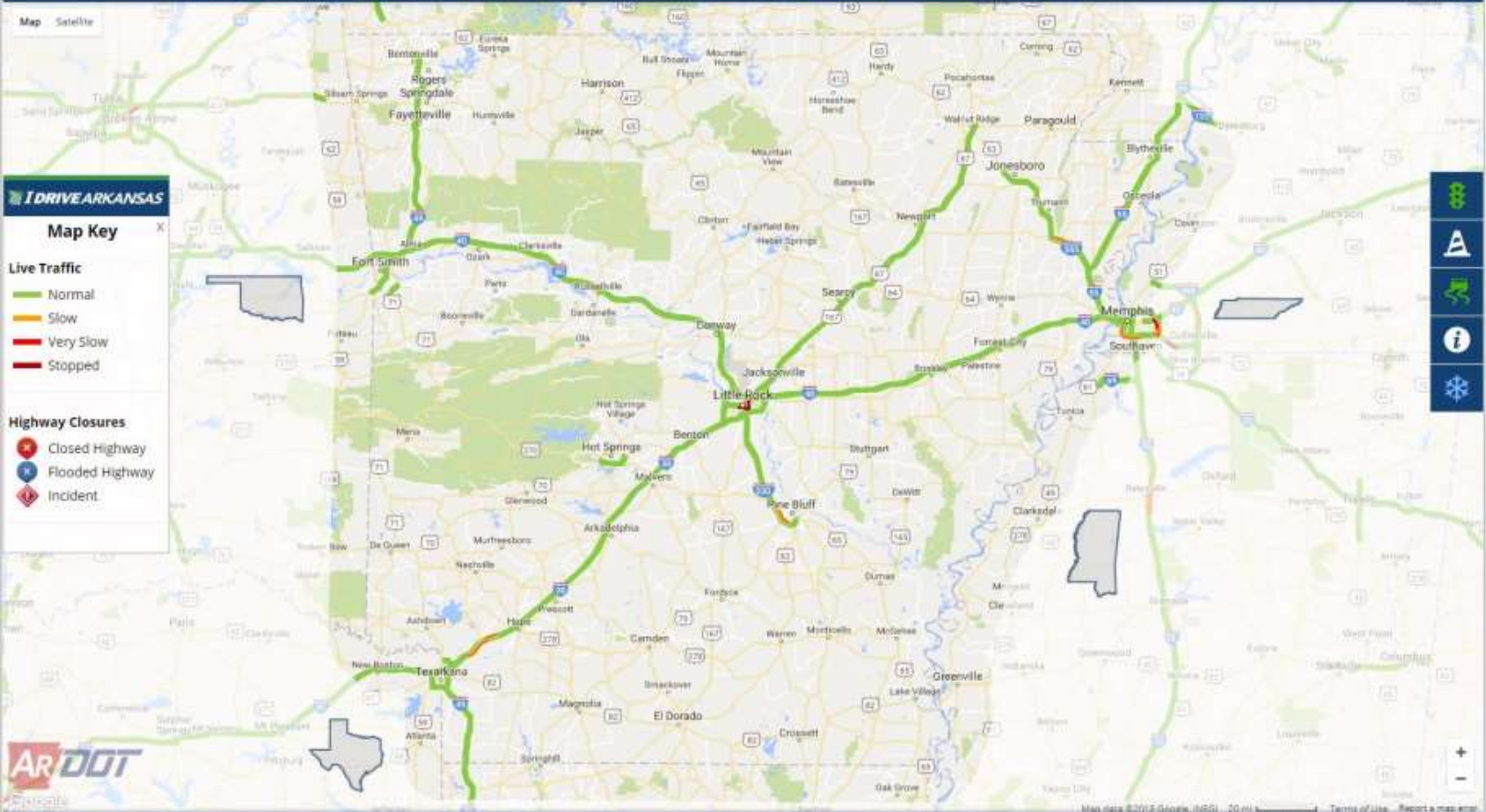
### Map Key

#### Live Traffic

- Normal
- Slow
- Very Slow
- Stopped

#### Highway Closures

- ✖ Closed Highway
- ✖ Flooded Highway
- ⬇ Incident



- 
- 
- 
- 





**I DRIVE ARKANSAS** | [Map](#) | [Construction Programs](#) | [Travel Information Report](#) | [Contact](#)

Map | Satellite

**I DRIVE ARKANSAS**

**Map Key**

**Facilities**

- Park and Ride Lot
- Closed

AR DOT  
©2018 Arkansas Department of Transportation | [Acceptable Use](#) | [Privacy](#) | [Feedback](#)

I DRIVE ARKANSAS

[Map](#)
[Construction Programs](#)
[Travel Information Report](#)
[Contact](#)

**Map Key**

**Live Traffic**

- Normal
- Slow
- Very Slow
- Stopped

**Highway Closures**

- ✖ Closed Highway
- ✖ Flooded Highway
- ⬇ Incident

©2016 Arkansas Department of Transportation

Acceptable Use | Privacy | Feedback

Map data ©2016 Google, INEGI 20 mi

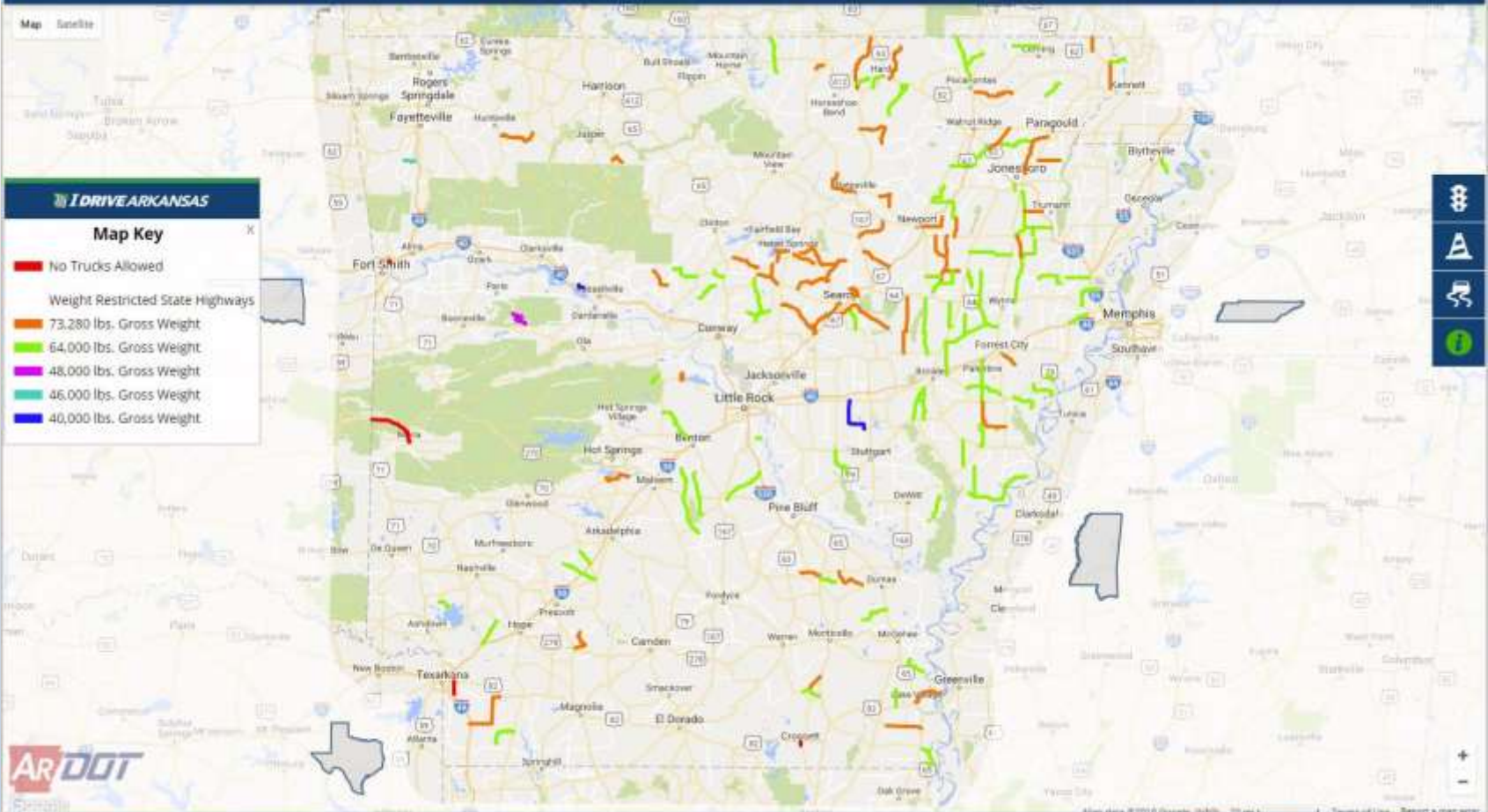
# I DRIVE ARKANSAS

Map

Construction Programs

Travel Information Report

Contact



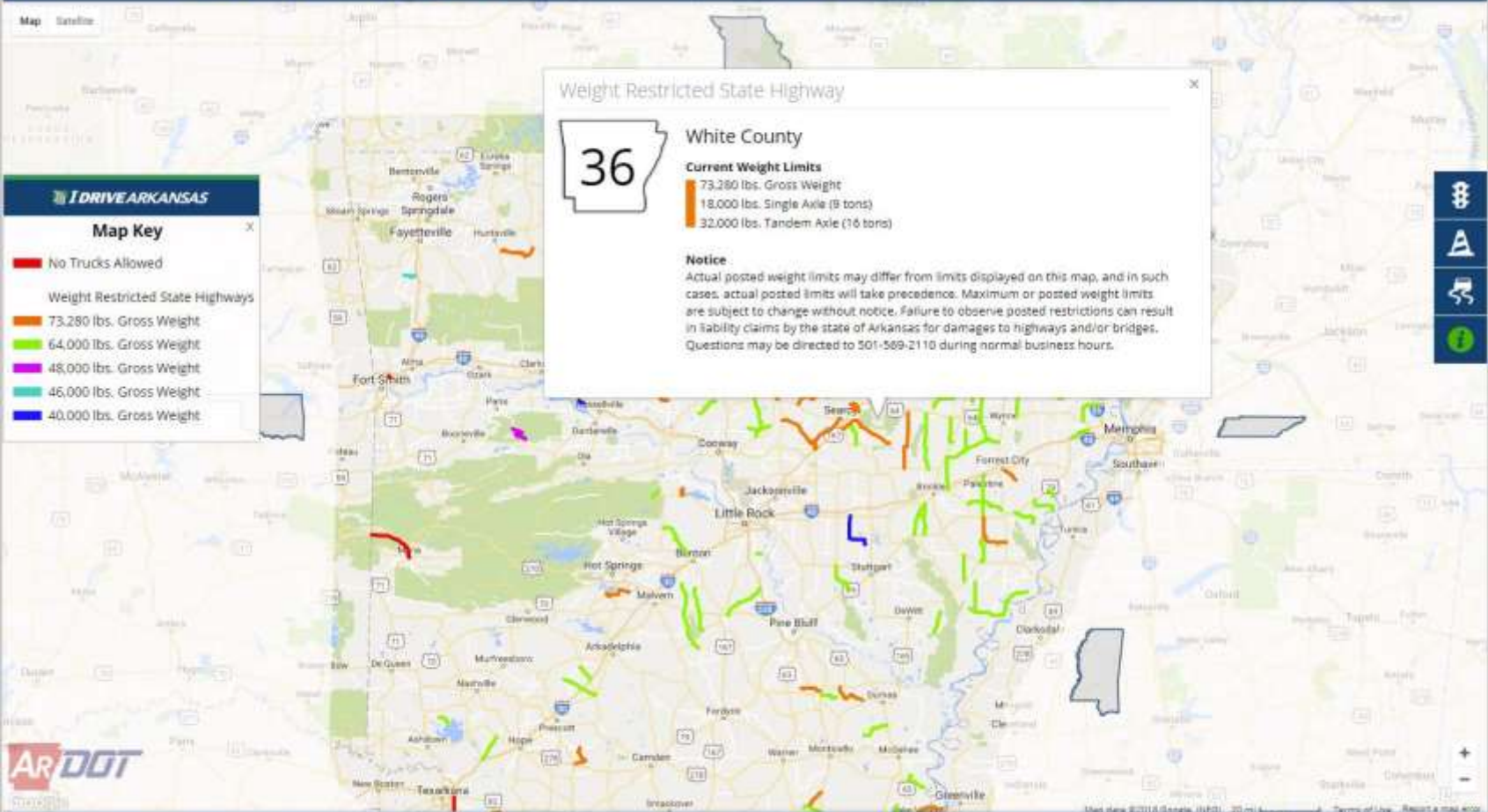
**I DRIVE ARKANSAS**

**Map Key**

- No Trucks Allowed
- Weight Restricted State Highways
- 73,280 lbs. Gross Weight
- 64,000 lbs. Gross Weight
- 48,000 lbs. Gross Weight
- 46,000 lbs. Gross Weight
- 40,000 lbs. Gross Weight

- Layers
- Map Style
- Navigation
- Information





### Weight Restricted State Highway



#### White County

##### Current Weight Limits

- 73,280 lbs. Gross Weight
- 18,000 lbs. Single Axle (8 tons)
- 32,000 lbs. Tandem Axle (16 tons)

##### Notice

Actual posted weight limits may differ from limits displayed on this map, and in such cases, actual posted limits will take precedence. Maximum or posted weight limits are subject to change without notice. Failure to observe posted restrictions can result in liability claims by the state of Arkansas for damages to highways and/or bridges. Questions may be directed to 501-569-2110 during normal business hours.

#### Map Key

- █ No Trucks Allowed
- Weight Restricted State Highways**
- █ 73,280 lbs. Gross Weight
- █ 64,000 lbs. Gross Weight
- █ 48,000 lbs. Gross Weight
- █ 46,000 lbs. Gross Weight
- █ 40,000 lbs. Gross Weight

I DRIVE ARKANSAS

 Map
 Construction Programs
 Travel Information Report
 Contact

Map Satellite

I DRIVE ARKANSAS

### Map Key

**Live Traffic**

- Normal
- Slow
- Very Slow
- Stopped

**Highway Closures**

- Closed Highway
- Flooded Highway
- Incident

AR DOT

©2016 Arkansas Department of Transportation      Acceptable Use | Privacy | Feedback

**I DRIVE ARKANSAS** [Map](#) [Construction Programs](#) [Travel Information Report](#) [Contact](#)

Map Satellite

**I DRIVE ARKANSAS**

**Map Key**

- Weight Restricted State Bridge

©2018 Arkansas Department of Transportation

Acceptable Use | Privacy | Feedback

I DRIVE ARKANSAS

 Map
 Construction Programs
 Travel Information Report
 Contact

**Map Key**

**Live Traffic**

- Normal
- Slow
- Very Slow
- Stopped

**Highway Closures**

- Closed Highway
- Flooded Highway
- Incident

©2016 Arkansas Department of Transportation

Acceptable Use | Privacy | Feedback

Map data ©2016 Google, IAGI, 20 mi







I DRIVE ARKANSAS

[Map](#)
[Construction Programs](#)
[Travel Information Report](#)
[Contact](#)

**Map Key**

**Live Traffic**

- Normal
- Slow
- Very Slow
- Stopped

**Highway Closures**

- ✖ Closed Highway
- ✖ Flooded Highway
- ⬇ Incident

©2016 Arkansas Department of Transportation

Acceptable Use | Privacy | Feedback

Map data ©2016 Google, IAGI, 20 mi

[Terms of Use](#) [Report a map error](#)



### Sign-in to ACTIS

**Username**

**Password**

Enter

[Forgot Password?](#)

Accounts



Email Management



Highway Closures



Incidents



Facilities



Winter Weather



Reports



Posted Bridges



State Police



Highway Police



ADEM



Roles



Weather Management



Map Layers



iDrive Banner



Traffic Cameras



System Mgmt.



[Test] Highway Incident Report - Message (HTML)

File Message

Ignore X Meeting Move to: 7 To Manager  
Junk + Delete Reply Reply All Forward More + Team E-mail Done  
Delete Respond Quick Steps Move Move OneNote Assign Mark Categorize Follow Up  
Add Feedback + Halogen Software

If there are problems with how this message is displayed, click here to view it in a web browser.

Sent: Wed 5/30/2018 12:48 PM

From: ACTIS <no-reply@ark.org>  
To: Straessle, Danny  
Cc:  
Subject: [Test] Highway Incident Report

## Pulaski County

**Status:** In Progress

**Incident Type:** Accident

**Route:** State Highway 338, Section 1

**Location:** 0.4 Miles East of State Highway 5

**Log Mile:** 0.5

**Direction:** All

**Lane(s) Impacted:** All

**Injury:** Yes

**Fatal:** Yes

**Hazmat:** No

**AaDOT:** District 06 / Pulaski 03 AMH

**AHP District:** 1

**ADEM Area:** Central

**Date / Time:** May 30, 2018 at 12:47 PM CDT

**By:** Arkansas State Police / Troop L

---

**Description**  
Multiple injuries and one confirmed fatality.

See the [Incident Report](#) on iDrive Arkansas for the latest information on highway conditions throughout the state.

This update is generated by **ACTIS** – the AaDOT Construction and Travel Information System.

Please do not reply.



**Arkansas DOT**

@myARDOT



Pulaski Co: I-40 WB right lane closed to repair damage from a previous accident. The closure will be tonight, 9:00 pm - 6:00 am between the Valentine Rd. & Hwy. 391 (Galloway) overpasses (mm 160 - 161) just E. of NLR. Monitor traffic at [IDriveArkansas.com](http://IDriveArkansas.com).

#artraffic



5:30 PM - 30 May 2018



Arkansas DOT

@myARDOT



Pulaski Co: (UPDATE) Hwy. 67/167 left lane is now open after wrecker removed stalled vehicle near LRAFB Exit 11 in Jacksonville. Monitor at [IDriveArkansas.com](http://IDriveArkansas.com). #artraffic #cnattraffic



6:45 AM - 25 May 2018

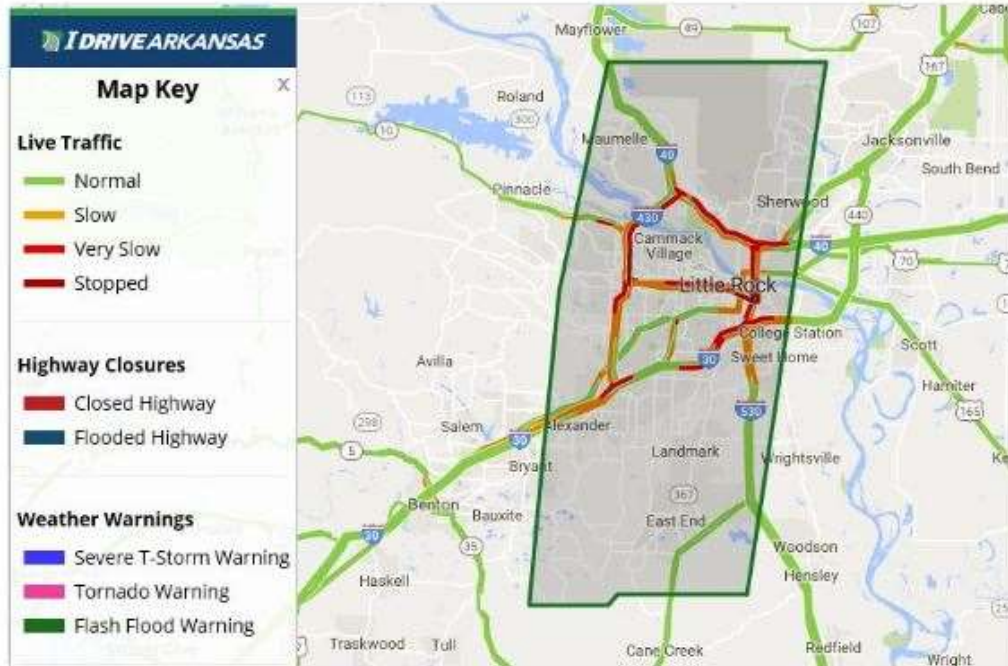


Arkansas DOT

@myARDOT



Advisory: Heavy rain has prompted numerous traffic delays and a flood warning in the Little Rock metro. Use caution if driving. Monitor weather at [weather.gov/lzk](http://weather.gov/lzk) Traffic conditions at [IDriveArkansas.com](http://IDriveArkansas.com). #artraffic #cnattraffic



4:30 PM - 23 May 2018





**Arkansas DOT**

@myARDOT



Hempstead Co: (UPDATE) I-30 WB left lane is open W. of Hope (mm 20). The right lane will remain closed for several hours. WB drivers should consider Exits 46 or 44 or Exit 31 to Hwy. 67 as an alternate route. Monitor traffic at [IDriveArkansas.com](http://IDriveArkansas.com). #artraffic #swattraffic



4:35 PM - 18 May 2018



Arkansas DOT

@myARDOT



Hempstead Co: (UPDATE) Police are not yet providing an estimate when lanes will re-open on I-30 WB near Hope (mm 20). ArDOT will provide updates when we receive them. Thanks for your patience. Monitor at [IDriveArkansas.com](http://IDriveArkansas.com). #artraffic #swattraffic



1:16 PM - 18 May 2018

**IDRIVEARKANSAS** [Map](#) [Construction Programs](#) [Travel Information Report](#) [Contact](#)

Map Satellite

**IDRIVEARKANSAS**

**Map Key**

**Live Traffic**

- Normal
- Slow
- Very Slow
- Stopped

**Highway Closures**

- Closed Highway
- Flooded Highway
- Incident

**AR DOT**

©2018 Arkansas Department of Transportation

Acceptable Use | Privacy | Feedback

Map data ©2018 Google, INRIX, 25 mi



**AR DOT**  
TRAFFIC MANAGEMENT CENTER

























Highway Incident Reports  
501-569-2469

The screenshot displays the 'I DRIVE ARKANSAS' mobile application interface. At the top, there is a blue header with a menu icon, the text 'I DRIVE ARKANSAS', and a 'Key' button. Below the header, the map view shows a region in Arkansas with various highways and cities. A white popup window titled 'Your Location' is centered on the map, displaying the following information:

- Interstate 430**
- County Number:** 60
- County:** Pulaski
- Route:** Interstate 430
- Section:** 21
- Log Mile:** 7.03
- Area:** Pulaski 03
- AMH Number:** 6603
- Route ID:** 60x00430x210
- Actual Distance from Route:** 170.39 Feet

The map background shows major highways like I-40, I-55, and I-49, and cities such as Little Rock, Benton, and Stuttgart. The bottom of the screen features a navigation bar with icons for traffic, a road sign, a truck, and an information icon.

|   |   |   |  |
|---|---|---|--|
| <p>Accounts</p>              | <p>Email Management</p>  | <p>Highway Closures</p>  | <p>Incidents</p>          |
| <p>Facilities</p>            | <p>Winter Weather</p>    | <p>Reports</p>           | <p>Posted Bridges</p>     |
| <p>State Police</p>          | <p>Highway Police</p>    | <p>ADEM</p>              | <p>Roles</p>              |
| <p>Weather Management</p>  | <p>Map Layers</p>      | <p>iDrive Banner</p>   | <p>Traffic Cameras</p>  |
| <p>System Mgmt.</p>        |   |   |  |

- [Contact Us](#)
- [Ask a Question](#)
- [Report a Problem](#)
- [Report Littering](#)
- [Request a Map](#)
- [Adopt a Highway](#)
- [Feedback](#)

## Contact Us



### Central Office Headquarters

**Physical Address**  
 10324 Interstate 30 (Exit 130)  
 Little Rock, AR 72209  
 501-569-2000

**Mailing Address**  
 P.O. Box 2261  
 Little Rock, AR 72203

[Map It](#)



### AHTD Offices

| Name  | Address   | Phone        |
|---|---|--------------|
| <a href="#">Central Office Headquarters</a> | 10324 Interstate 30 (Exit 130)<br>Little Rock, AR 72209 | 501-569-2000 |
| <a href="#">District One</a>                | 2701 U.S. Highway 64<br>Wynne, AR 72396                 | 870-238-8144 |
| <a href="#">District Two</a>                | 4900 Highway 65 South<br>Pine Bluff, AR 71601           | 870-534-1612 |
| <a href="#">District Three</a>              | 2911 Highway 29 North<br>Hope, AR 71801                 | 870-777-3457 |
| <a href="#">District Four</a>               | 2001 East Highway 20<br>Fayetteville, AR 72703          | 937-393-2300 |

# Questions?

